



DAME STREET, ANGEL, N1

N1 7FS

£595,000
LEASEHOLD

A beautifully presented one bedroom (2nd floor) apartment overlooking Regents Canal, situated in the heart of Angel, Islington.

This one bedroom apartment boasts approximately 590 Sq ft of living space. The property comprises of an open plan kitchen living area leading to a private balcony with views over Regents Canal & the City, double bedroom with fitted wardrobes and a contemporary shower room.

Dame Street is located in the ever popular Angel, Islington. The Regents Canal is moments away and Upper Street is just 0.3 miles from the development. Angel station, Zone 1 is 0.7 miles away.

Hemmingfords

Dame Street, N1

Approximate Gross Internal Area
589.0 sq ft / 54.72 sq m

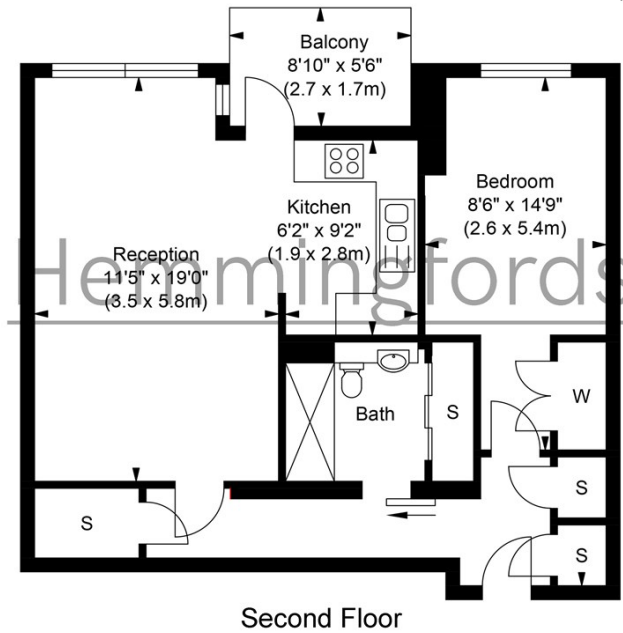


ILLUSTRATION FOR IDENTIFICATION PURPOSES ONLY

ALL MEASUREMENTS ARE MAXIMUM, AND INCLUDE WINDOW BAYS AND WARDROBES WHERE APPLICABLE
THIS PLAN MUST NOT BE REPRODUCED BY ANY OTHER PERSON WITHOUT PERMISSION



Energy Efficiency Rating		
	Current	Potential
Very energy efficient - lower running costs		
(92 plus) A		
(81-91) B	84	84
(69-80) C		
(55-68) D		
(39-54) E		
(21-38) F		
(1-20) G		
Not energy efficient - higher running costs		
England & Wales	EU Directive 2002/91/EC	

Agents Note: Whilst every care has been taken to prepare these particulars, they are for guidance purposes only. All measurements are approximate and are for general guidance purposes only and whilst every care has been taken to ensure their accuracy, they should not be relied upon and potential buyers/tenants are advised to recheck the measurements

Hemmingfords Sales
Second Floor
34 Upper Street
London
N1 0PN

02038907470
info@hemmingfords.co.uk
www.hemmingfords.co.uk

Hemmingfords